



The Mountain Matters

THE MOUNTAIN RETREAT & LEARNING CENTERS, INC.

April 2001



Spend Your Memorial Day Weekend at The Mountain *Building Sustainable Community*

Calling all Mountain members and donors! Plan to join us for this very special Memorial Day Weekend. You'll have the opportunity to be at the table for the first official meeting about **The Mountain's** proposed Residential Community at the base. Make your voice heard and join the team that will begin working on making the Residential Community a reality. Learn what it will take to build sustainable community that models committed environmental stewardship and intentional community.

In addition, we'll also experience music, nature, visions of the future, work projects, worship and the Annual Meeting. As always you'll enjoy wonderful food and lots of Mountain family fellowship. Saturday we'll meet at the base of **The Mountain** for a barbecue with all the fixin's and fun of a picnic. On Sunday, the annual early morning memorial service will be held in the Memorial Garden honoring Life Members who have died during the past year. Following breakfast we'll join together for worship. Plus you'll get an update on **The Mountain's** vision for the future.

Workshops

- **Residential Community Discussion** – Participate in the first formal meeting about **The Mountain's** Residential Community at the base. Topics to be explored include:
 - ◆ What should it look like . . .
 - how could such a community "drive" **The Mountain** of the future,
 - what will it take to ensure the community is sustainable,
 - what kinds of living units should the community include,
 - how should ownership be defined,
 - what types of public buildings and services should the community include,
 - what type of community outreach will be necessary to make this happen,
 - and more.

Continued on page 2

The Board of Trustees Recommends Governance Changes *Consistent with the Growth of The Mountain Retreat & Learning Centers, Inc.*

As has been written about in previous *The Mountain Matters*, **The Mountain** continues to expand its reach, extending the mission and vision to more and different groups of youth and adults. The Board of Trustees recognizes that the growth and energy of the Mountain led by the vision of the staff requires the same expansion of energy and vision by the Board.

The Board, therefore, is recommending a governance change (with appropriate bylaw changes) that will allow more people to be involved in the leadership in an energetic and focussed way, thus providing the necessary direction and support for the staff. These changes includes the following:

- Expanding the Board of Trustees from the existing six (6) elected plus five(5) appointed positions to a total of twenty-two (22) positions (18 elected and 4 appointed).
- This board will be divided into committees that will focus on each of the divisions of MR&LCs including the Retreat Center, Milestone Learning Center, Learning Center for Leadership, and the Residential Community. Within the board of twenty-two (22) members a seven (7) person Executive Committee will be appointed that will focus on the ongoing administrative and fiduciary issues of The Mountain Retreat & Learning Centers, Inc.

Continued on page 2

ANNUAL MEETING EDITION!

Come and have a place at the table for this discussion. We'll also be recruiting people to be a part of a Residential Community Committee. Out of this discussion, the Committee will be able to start moving forward in examining the topics listed above, each of which will need to be fully explored before a complete plan can be developed. If you can't attend but are interested in participating in the committee, please contact **Larry Wheeler**.

- **Building Sustainable Community** — Hear from the experts on how **The Mountain's** Residential community can become an EcoVillage. An ecovillage is an urban or rural community whose members try to provide a high quality lifestyle without taking more from the Earth than they give back. Ecovillages attempt to integrate a supportive social environment with a low-impact way of life. To achieve these aims, ecovillages typically build on various combinations of three dimensions: Community, ecology and spirituality. These three dimensions have always been at the heart of **The Mountain's** mission.

- **"Ways that estate planning can help both you and The Mountain"** — A workshop conducted by **Hal Reed**, Director of Planned Giving at the University of Central Florida, in Orlando. Hal is a member of The Mountain Endowment Board.
- **Youth Program** — We will have a Youth Program, designed depending on the ages and numbers of youth who register.
- **Dining Hall** — See the final designs and learn about the wonderful plans for remodeling this key building. We think you'll be excited about where this is going.
- **Work Projects** — Join in the fun of volunteering for **The Mountain**. We've got a job waiting for you. Members at Thanksgiving regularly tell us that the work projects are one of the highlights of their stay.

Two- and three-night options are available. A registration form for the program is on page 9 of this **Mountain Matters**. Or call **The Mountain Office (828) 526-5838, ext. 0**.

Memorial Day Weekend Rates

(Friday, 5/25 — Monday, 5/28, with 4-hour work credit)

	Lodge (Double/triple occupancy)	Cabin (Double/triple occupancy)	Cabin Shared (Multiple occupancy)	Youth (12-17)	Children (4-11)
3-night option	\$203	\$189	\$175	\$113	\$65
2-night option	\$126	\$119	\$112	\$80	\$50

Please indicate on the registration form which "option" you are registering for — the three- or two-night option.

Governance Changes — Continued from page 1

- A development committee (Board of Friends) will be formed to support the growing need for capital dollars of The MR&LCs. The chairperson of this committee will be a board member serving on the Executive Committee.
- The twenty-two (22) member board will meet once per year, as soon as practical after the beginning of each calendar year. Each of the "center committees" will meet once per year as a full board and throughout the year as individual committees as appropriate to support the particular division to which they have been appointed.
- The Executive Committee will meet three (3) times per year and once with the full Board of Trustees.

The Trustees feel that structuring the board this way will accomplish the following:

- Allow for more diversity of board membership
- Encourage board members to focus their energies in support of the divisions to which they have been appointed
- Provide timely and expeditious handling of administrative and fiduciary issues
- Allow the President to work with board members in a more focused way.

The Board of Trustees of The Mountain Retreat & Learning Centers, Inc. has reviewed each of these initiatives and the supporting bylaw changes and unanimously recommends that they be adopted by the membership.

Ed Mangiafico
Chair, Board Leadership Committee

Meet The Candidates

In line with the new governance model, the Board of Trustees recommends the election this year of six (6) new Trustees to its board. In support of the its objective to develop a diverse board of skilled people, the Board submits the following six (6) candidates for your consideration.

John J. Blevins – John is an active member of All Souls UU Church of Kansas City, Missouri, where he has served in numerous volunteer roles, including President of the Board of Trustees. He has served on the lay staff of the Midwest Leadership school since 1998, and was the Dean of the School in 2000. He was a member of the Fulfilling the Promise Task Force, and currently is the All Souls liaison to the new Gaia Community Congregation. He worked for Hallmark Cards for 30 years, and for 15 years was the Data Communications Manager. In that capacity, he managed the design and construction of the corporate data and voice telecommunications hardware systems and networks. John has a B.A. in Economics from the University of Missouri at Kansas City. He has been married for 36 years and has two adult UU daughters.

Janice Marie Johnson – Janice participated in The Mountain's Multicultural Community Retreats (Community Church, New York and Chicago's 1st Church) in the early 90s, and has a strong cross-cultural and interfaith life experience. She is an active member of Community Church, where she has served in a number of capacities, including Chair of the Board. She is on the Metropolitan New York District Anti-Racism and Nominating Committees and is a UUA Jubilee World Trainer and Commissioner. She has also served on the UUA's Commission on Appraisal. Janice is co-founder of the multicultural and multiethnic singing group "commUnity." Currently, she is the Director of Travel at Playbill, the premier theatre magazine company, and is taking graduate courses at Skidmore, studying Conflict Resolution. Janice is married and the mother of a 12-year-old daughter, Lehna.

Bruce Parrish – Bruce became involved with **The Mountain** through the Gay Spirit Visions program, and has been actively involved here in numerous capacities ever since—as program participant, dishwasher, guest service volunteer, and worked for 6 months as Administrative Assistant in the Development Office. Bruce is currently a member of the Search Committee for The Mountain Retreat Center Director. He was an Instructor of Business and Office Education for ten years for the state of Georgia. Bruce is a graduate of Young Harris College in Georgia, and of the University of Georgia (B.S.

Education and M.S. Business and Office Education). He has served on the Board of the Alumni Association for Young Harris College, is editor and proofreader of three books and numerous newsletters, and has co-authored two textbooks.

Rev. Tom Russell – Tom was a member of the Forming Board of Milestone Learning Center, and was instrumental in promoting the start-up of the current Milestone LEAP program in the St. Joseph, Missouri area. Tom is currently the pastor of the First Christian Church in St. Joseph, Missouri. He served on the national staff of the Christian Church, Disciples of Christ, and the Department of Church in Society. There he worked for fifteen years in a program that helped lay people change the conditions of racism and poverty. He also served on the working group of the National Council of Churches that addressed national hunger issues. Tom's interest in systems and social and personal change goes back to his training in group dynamics and the civil rights movement.

Jeanne Shirly – Jeanne has been involved with **The Mountain** since 1988, when she spent her summer working in the kitchen. From 1989-1992, she served as a Camp Counselor and in 1993 and 1994 she served as co-coordinator of MountainCamp. Jeanne graduated from George Mason University with a B.A. in Sociology/Women's Studies, and she obtained her law degree from the University of Arizona at Tucson. She worked at the Public Defenders Office for several years before starting her own practice. Her primary focus is in the area of juvenile law. Jeanne is an active member of the Tucson Chapter of the National Lawyers Guild, a progressive lawyers' organization committed to social change. She volunteers at two non-profit organizations and is a co-leader of a Girl Scout troop.

Dr. Anthony Stringer – Tony is a Patron Member of **The Mountain** and has served on both The Mountain Board of Trustees and on the Milestone Learning Center's Forming Board. He was faculty coordinator for the "2000-2001 Millennium on The Mountain," was the guest faculty for Birmingham, Michigan Congregational Retreat in 2000, and was co-coordinator of a training for Lay Ministers in 1998. Tony is an Associate Professor in the Department of Rehabilitation Medicine (Emory University); is a Lay Minister for UU Congregation of Atlanta; and is co-founder of Thurman Hamer Ellington Percussion Choir. His wife, Sekayi, is a frequent Office Volunteer at **The Mountain**, and daughter Ayanna has participated in MountainCamp and Leadership School for Social Justice.

To All Members:

The Board of Trustees of The Mountain Retreat & Learning Centers, Inc. recommends the following changes to the current Bylaws last approved by the membership on May 29, 1999:

Change # 1 – Corporate Name Change

Add the letter “s” to the word Center in the corporate name everywhere it appears in the Bylaws. The amended name would be The Mountain Retreat & Learning Centers, Inc.

Reason: Since we now have four operating divisions, the Retreat Center, Milestone Learning Center, Learning Center for Leadership and the Residential Community, the word “Centers” more accurately reflects the organization than the singular word “center.”

Change # 2 - Title Change, Chair

Change the title “President” to “Chair” everywhere it appears in the Bylaws when referring to the presiding officer of the Board of Trustees.

Reason: Last year the Board of Trustees changed the title of the Executive Director of The Mountain Retreat & Learning Centers, Inc. to President and the President of the Board of Trustees to Chair. The Board of Trustees did this to allow the operating executive of the organization, its president, to execute legal documents on behalf of the corporation in line with approvals granted the position. North Carolina law requires such documents be signed by an individual with the title of President rather than Executive Director. This in no way changes the way The Mountain has been managed for the past eleven years; rather it is just a title change to bring The MR&LCs into compliance with state law. Therefore, to avoid confusion with the presiding officer of the board, that title should be changed to “chair.”

Change # 3 - Title Change, President

Change the title “Executive Director” to “President” everywhere it appears in the Bylaws when referring to the chief executive staff person of MR&LCs.

Reason: Same as above for the title change for Chair.

Change # 4 – Title Change, Chief Executive Office

Remove the title “Chief Executive Officer” from the Board Chair’s title everywhere it appears in the Bylaws.

Reason: Currently the presiding officer of the Board of Trustees

is also referred to as the “Chief Executive Officer” in the Bylaws. In fact, the chief executive staff person, or President serves in this role and should be referred to as such. The Board Chair should not be designated as the “Chief Executive Officer.”

Change # 5 - Composition

Change the number of elected voting trustees from six (6) to eighteen (18) and the number of board appointed voting trustees from five (5) to four (4).

Reason: See related article on the front page by Ed Mangiafico, Chair, Board Leadership Committee.

Change # 6 – Transition

To allow the board to grow from six (6) elected voting trustees and five (5) appointed voting trustees, each serving three (3) year terms, the board will require three (3) years to achieve the desired number of trustees. This Bylaw addition allows for such a transition and does not require the board to have twenty-two (22), three (3) year serving trustees (18 elected and 4 appointed) until the Annual Meeting of the Corporation in May 2004.

Reason: It may take up to three years to complete a comprehensive search for the candidates, with the appropriate skills required to fill twenty-two positions. In addition, three years of transition will be required to achieve a balanced board with each member serving three-year terms. To accomplish such, some members will be appointed to one (1) and two (2) year terms during the transition period in addition to those elected for three (3) year terms.

Change # 7 – Number of Meetings

Change the number of regular meetings for the full board from four (4) times per year to at least once (1) per year and add that the Executive Committee of the board will meet no less than three (3) times per year in addition to the annual full board meeting.

Reason: See related article on the front page by Ed Mangiafico, Chair, Board Leadership Committee.



PLEASE VOTE!

BALLOT

(All members plus donors who have given at least \$50 in the past year are eligible to vote.)

In line with the new governance model, the Board of Trustees unanimously recommends that all of the following six (6) candidates be elected to The Mountain Board of Trustees, each serving three (3) year terms effective with the Annual Meeting, May 26, 2001. The Board of Trustees asks for your affirmative vote for each candidate.

Candidates for Trustees

(To serve three-year terms effective May 26, 2001—you may vote for no more than six [6] candidates):

☐ John Blevins
 ☐ Janice Johnson
 ☐ Bruce Parrish
☐ Tom Russell
 ☐ Jeanne Shirly
 ☐ Tony Stringer

In case of more than one eligible voter:

☐ John Blevins
 ☐ Janice Johnson
 ☐ Bruce Parrish
☐ Tom Russell
 ☐ Jeanne Shirly
 ☐ Tony Stringer

The Board of Trustees unanimously recommends that all of the following seven (7) Bylaw changes be approved. The Board of Trustees asks for your affirmative vote on each change.

Bylaw Changes

(Please vote on all 7 changes)

Change	Yes	No	Yes	No
			(in case of more than 1 eligible voter)	
#1 Corporate Name Change	<input type="checkbox"/>	<input type="checkbox"/>	<input type="checkbox"/>	<input type="checkbox"/>
#2 Title Change, Chair	<input type="checkbox"/>	<input type="checkbox"/>	<input type="checkbox"/>	<input type="checkbox"/>
#3 Title Change, President	<input type="checkbox"/>	<input type="checkbox"/>	<input type="checkbox"/>	<input type="checkbox"/>
#4 Title Change, Chief Executive Officer	<input type="checkbox"/>	<input type="checkbox"/>	<input type="checkbox"/>	<input type="checkbox"/>
#5 Composition	<input type="checkbox"/>	<input type="checkbox"/>	<input type="checkbox"/>	<input type="checkbox"/>
#6 Transition	<input type="checkbox"/>	<input type="checkbox"/>	<input type="checkbox"/>	<input type="checkbox"/>
#7 Number of Meetings	<input type="checkbox"/>	<input type="checkbox"/>	<input type="checkbox"/>	<input type="checkbox"/>

Note: You may vote via U.S. mail or e-mail.

To vote by e-mail, please send your votes to the Corporate Secretary Jeri Moulder at JeriMoulder@aol.com. Please put "Mtn. Vote" in the subject line and specify the names of those voting.

To vote by U.S. mail, please enclose your vote in an envelope and address it to:

Jeri Moulder
 1623 Las Canoas Road
 Santa Barbara, CA 93105

Please put the names of all voters on the outside of the envelope.

Name of voter: _____

Name of second voter: _____

Changes to Mountain Registration Process

The Mountain celebrated its 20th anniversary last year. As a maturing organization, **The Mountain** has taken a fresh look at its registration process and policies. The changes described below will go into effect November 1, 2001.

These changes were decided upon after extensive study and discussions of **The Mountain's** current practices. Each of the changes is designed to address challenges **The Mountain** encounters on a regular basis. They will also bring **The Mountain** in line with practices commonly in place at other comparable retreat centers.

Rate Structure

Currently, program rates vary by housing type. Starting on November 1, **The Mountain** will streamline its rate structure from three levels to two. Participants will indicate their preference between double-occupancy housing and multiple-occupancy housing. Multiple occupancy will be defined as 3 or more adults sharing a bathroom. Private rooms will continue to be an option with a per-night surcharge when there is room available.

Quicker Check-in Process

Check-ins for programs will be much quicker, easier and simpler. All you will need to do is check in with the office for your nametag and housing assignment and then you are off to social time! That's because everyone will be required to pay their total balance before they arrive for a program. And early registrants for all programs will be rewarded with an early-bird discount rate. A regular rate will be in effect until two weeks before the program begins when a late registration fee will go into effect. By planning ahead, you will be able to save money on Mountain registration fees.

Drop Ins

The Mountain is a program center, but drop-in guests are accommodated when there is room available. **The Mountain** will now be using the "American Plan" for all drop-in guests. The per-day rate will include lodging and three meals. In addition, drop-ins may attend open programs at no additional charge. Rate cards for drop-in rates are available from **The Mountain** office.

MountainCamp Needs Your Old Games

The Mountain's inventory of games is in desperate need of restocking. Please contribute any games that you have around but are not using. It would be very helpful. Here is a list of desired games, but please do not limit contributions to just these: Risk, Scrabble, Monopoly, Chutes and Ladders, Candy Land, Jenga, Connect 4, Battleship, Yahtzee, and Parchesi.

Thank you for all your support. If you have any questions, please contact **Mike Stein** at (828) 526-5838, ext. 234.

Transformations Continue with Upgraded Meeting Spaces

On your next visit, check out the new and improved Great Room. With the addition of blinds, the Great Room can now be darkened for slides and videos, and glare can be eliminated while still having natural light. Wow! A beautiful room is now even more usable.

For evening use, volunteer **John Vacher** has mounted new lighting with dimmer switch. Now guests can adjust the amount of light needed, from bright light for games to low light for other activities, such as concerts and late-night chats around the fire.

Reaching toward "state of the art" instructional aids, **The Mountain** now has two new TVs for use with instructional videos. The Great Room has a large 36" TV on a cart, and the Tree House has a 52" projection screen TV that may be comfortably viewed from the back of the room. Many, many thanks to **Jan** and **Ernie Hoffman**, Elderhostel hosts, whose financial contributions made the purchase of the televisions possible.

The Mountain Matters is published bimonthly by
THE MOUNTAIN RETREAT & LEARNING CENTERS, INC.
P. O. Box 1299, Highlands, NC 28741
(828) 526-5838 • fax (828) 526-2511
e-mail: info@mountaincenters.org
www.mountaincenters.org

Robert E. Smith Editor
Walita Olson Production
Printed by Cashiers Printing of Cashiers, NC

Please note our website address has changed to:
www.mountaincenters.org

There's Still Room in the Following Programs . . .

RETREAT CENTER PROGRAMS

Mother-Daughter Spring Retreat

May 4 – 6, 2001

\$145 - \$165

This unique weekend for mothers and their daughters, age 11-18, is designed to provide shared experiences in a community of acceptance, warmth, comfort and the serene natural beauty of the Southern Mountains. Plan now to celebrate your mother-daughter relationship at The Mountain this May!

Exploring the Nantahala Wilderness Plan a MountainScape

June 17 – 21, 2001

\$315 - \$365

Join naturalist **George Ellison** and folklorist **Lee Knight**, who team up to lead you into a most unusual part of western North Carolina, the Nantahala River Watershed. You'll spend two days exploring: learning the wildflowers, birds and some of the human history of the area, visiting scenic areas and walking a bit on the Appalachian Trail. After exploring the area, we'll finish with a raft trip on the Nantahala River.

Family MountainCamp

July 1- 7, 2001

\$395 - \$465 for adults **\$155** for youth

You and your family will experience typical "camp" activities—boating and swimming on the lake; community building within and between families on the Challenges courses; non-competitive games, arts and crafts; folk dancing, hiking, nature study and much more.

MILESTONE LEARNING CENTER PROGRAMS

Leadership School for Social Justice

(For rising 10th Graders – 2001 High School Graduates)

July 8 – 14, 2001

\$388

This is a great opportunity to gain skills, knowledge and tools that will expand your leadership capacity in your local school, congregation or community organization. Through outdoor adventures, experiential workshops, arts and service activities, you'll be able to explore you own values, learn about others' perspectives, and find ways to put your ideas into action.

2001: A Leadership Odyssey

A Leadership Training for UU Young Adults

August 31 – September 3, 2001

(\$153 - \$174)

This web-enhanced, faith-based training will provide concrete tools and spiritual deepening; its purpose is to light the fire of social change, while empowering UU young adults to work within congregations.

LEARNING CENTER FOR LEADERSHIP PROGRAMS

Leadership School for Religious Educators

July 8 – 14, 2001

Early Bird — \$400 for registrations received before April 30

Regular — \$450 for registrations received between May 1 and June 1

Leadership School provides opportunities to explore your own leadership style, gain interpersonal and organizational skills, deepen your spiritual life, and network with people from small, mid-size and large UU congregations.

The Mountain School for Congregational Leadership

July 22 – 28, 2001

Early Bird — \$580 for registrations received before May 22

Regular — \$600 for registrations received between May 22 and June 22

The MSCL provides opportunities to explore your own leadership style, gain interpersonal and organizational skills, deepen your spiritual life, and network with people from small, mid-size and large UU congregations in the southeast.

Call **The Mountain Office** for more information and to register, (828) 526-5838, ext. 0. Or check out our website – www.mountaincenters.org

Call today and make **The Mountain** part of your 2001!

REGISTER TODAY!!!

Calendar at a Glance

Note: Programs in **bold print** are open to the public and with few exceptions there is always room for drop-ins or small to mid-size groups. Use the Registration Form on page 9 to register, or call The Mountain Office for more information — (828) 526-5838, ext. 0.

APRIL 2001

- 1-6 **Elderhostel**
- 6-8 Augusta UU Retreat
Greenville UU Retreat
UU Congregation of Atlanta Retreat
- 8-13 **Elderhostel**
- 16-19 SEUUMA conference
- 18-20 Enviroscope
- 20-22 **Embracing Your Lesbian Identity**
- 20-22 **Fly Fishing Weekend**
- 22-27 **Elderhostel**
- 28-29 Enviroscope
- 29-May 4 **Elderhostel**

MAY 2001

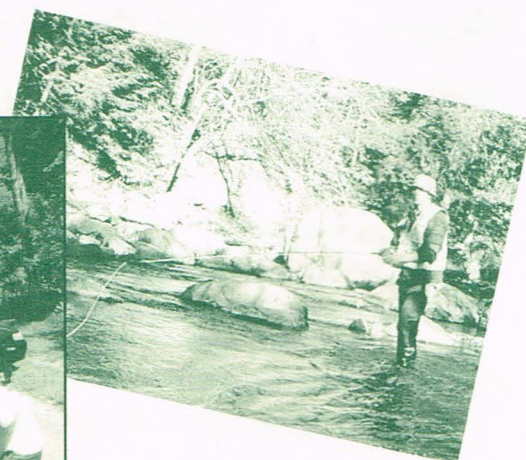
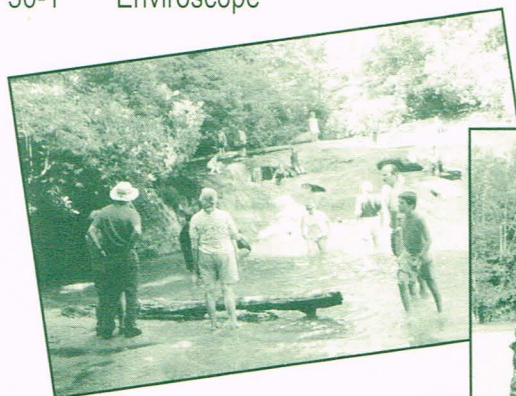
- 2-4 Enviroscope
- 4-6 **Mother-Daughter Spring Retreat**
Emerson UU Work Weekend
- 5-6 Enviroscope
- 6-11 **Elderhostel**
- 12-13 Enviroscope
- 13-18 **Elderhostel**
- 16-18 **Womenspirit Institute**
- 18-20 **Womenspirit Gathering**
- 20-25 **Elderhostel**
- 25-28 Memorial Day – Members & Donors Weekend
- 25-28 Mountain Board of Trustees Meeting
- 30-1 Enviroscope

JUNE 2001

- 1-3 Franklin Family Fellowship
- 3-9 Dallas LSSJ
- 3-9 **Elderhostel**
- 10-15 **Elderhostel**
- 10-July 14 **ASCENDERS**
- 10-July 28 **CITs**
- 17-21 **Exploring the Nantahala Wilderness:**
MountainScape
- 17-30 **Jr. High MountainCamp**
- 17-30 **Sr. High Back Country Adventure Camp**
- 22-24 Energy Psych
- 24-30 Boys and Girls Club

JULY 2001

- 1-7 **Family MountainCamp**
- 1-7 **Beginning MountainCamp**
- 1-14 **Elementary MountainCamp**
- 1-14 **Work & Adventure MountainCamp**
- 8-14 **Leadership School for Social Justice**
- 8-14 **Leadership School for Religious Educators**
- 15-20 NC Museum of Natural Sciences
- 15-20 Girls in Science
- 15-28 **Sr. High MountainCamp**
- 15-28 **Jr. High Back Country Adventure Camp**
- 22-28 **Mountain School for Congregational Leadership**
- 31-Aug. 5 **UU Musicians Network Conference**





REGISTRATION FORM

Program Name: _____

Dates: _____

Registrant: _____

Address: _____

City: _____ State: _____ Zip: _____

Evening Phone: (_____) _____ Day Phone: (_____) _____

E-mail Address: _____

Enter names of ALL registrants as you want them to appear on namelists:

Adults	Gender	Life Member?	Youth, children, infants	Age	Gender

• **Lodging Preference:** Indicate 1st, 2nd, 3rd choices. Please contact The Mountain Office for lodging descriptions.

♦ Housing preferences are not guaranteed but honored by date registration is received. Prices include lodging, programs, and meals. We will assign you a roommate if you do not come with one, or request one. There is a \$32 surcharge per night for private single room, if available.

LODGE *
Private bath (for adults)

CABIN *
Private bath

CABIN **
Shared bath

* 2-3 people sharing a bathroom in either the lodge or a cabin.

** 4-8 people sharing a bathroom in a cabin.

☐ Private room requested

Roommate Preference (if not registering together): _____

Bed Preference (subject to availability): Twin _____ Double (for 2) _____ Crib _____

Mobility Considerations: _____

Dietary Preference:

☐ Check this box if you have NO special dietary needs.

Indicate food you DO NOT eat:

fish _____ poultry _____ dairy _____ eggs _____ red meat _____ pork _____

Special dietary considerations: Allergies? Special diets? Vegan? (Please be specific)



NONREFUNDABLE DEPOSIT ENCLOSED: \$ _____. A \$50 nonrefundable, nontransferable deposit is required for each adult for a 2-3 night program; A \$150 nonrefundable, nontransferable deposit is required for each adult for a 4+ night program; and a \$25 nonrefundable, nontransferable deposit is required for each youth (ages 4-17) for a 2-3 night program; a \$50 nonrefundable, nontransferable deposit is required for each youth for a 4+ night program. **Your check payable to The Mountain is preferred;** Visa and MasterCard can be used by legibly printing your complete card number and expiration date below, and signing the space provided. The deposit is applied to your final bill. Deposit is nonrefundable in the event of cancellation.

Visa/MasterCard #: _____ Expiration Date: _____

Print Name (as appears on card): _____ Amount \$ _____

Cardholder's signature: _____ 401MM

Office use only: _____ Deposit received: _____ Housing: _____ Data: _____ Confirmed: _____

GIVING

Trillium Vision Holders (\$100,000+)

Margaret Schilling, Greenville, SC

Chinquapin Vision Holders (\$25,000 - \$34,999)

Irv & Millie Kagan, Atlanta, GA

Patron Members (\$5,000+)

Rem & Lee Stokes, Inverness, IL

Life Members (\$2,000 - \$2,500)

Nan Brockerman, Southfield, MI

Richard & Michelene Rothman, Rising Fawn, GA

Jenny & Mike Stein, Highlands, NC

(Anonymous gift to the Stein's)

Rem & Lee Stokes, Inverness, IL

Memorial Memberships (\$1,500)

Bob Polk, Brevard, GA 1907 - 2001

Irv & Millie Kagan Scholarship Fund for Underprivileged Youth (Gifts of \$250+)

(Note: All gifts of \$1,000+ shown with **)

Chris & Maralyn Christoffersen,

Scaly Mountain, NC

Special Gifts/Gifts-In-Kind/General Fund (Gifts of \$250+)

(Note: All gifts of \$1,000+ shown with **)

Sekayi & Tony Stringer, Stone Mountain, GA

New or Renewed Short-Term Loans or Promissory Notes

Gary & Terry Beale, Chamblee, GA

Barbara & Ron Buck, Norfolk, VA

Ann & Joe Creech, Roswell, GA

Jean & Roger Johnson, Atlanta, GA

Jerolyn & Paul Lowry, Atlanta, GA

Dixie & Miles McGinty, Sylva, NC

In Memoriam

Bernice Cross, Brevard, NC

Bob Polk, Brevard, NC

Generous Gift to Improve Guest Comforts

Anne Staley of Marietta, Georgia, recently made a significant gift of property to **The Mountain**. We will soon sell the property. Upon that sale, Anne's gift will result in a generous donation and will help ensure her own financial security because she will receive in return, a charitable gift annuity for the rest of her life. **The Mountain** will cover the obligation in a way that does not impact current or future earnings of **The Mountain**.

In making the gift, Anne has requested that many improvements be made at **The Mountain** that will significantly impact the guest experience at **The Mountain**. We're already seeing the benefits in the Dining Hall—new trays, twelve ounce glasses, and small plates for desserts. In the future, look for better lighting in the Great Room of the Lodge, two new sofas for the Great Room, more reading lamps throughout the facility, and many more towel racks and clothes hooks. Also, look for better accessibility to the REC Hall from the Dining Hall, from the road to the Dining Hall deck, and other places across the mountaintop. This is just a portion of what will happen—THANK YOU, ANNE!!

Anne first came to **The Mountain** in the early 1990s. Almost from the beginning of her relationship with **The Mountain**, she started giving in many different ways. She became a Life Member in 1993, volunteered to be the Mountain Ambassador in the Northwest UU congregation in Atlanta, and in recent years has been the person who has designed and sewn ALL of **The Mountain's** curtains—Great Room, Lodge bedrooms, REC Hall, cabins, etc.

She is clearly a Mountain treasure!

Volunteer Survey Coming

2001 is the International Year of the Volunteer. **The Mountain** thanks all Volunteers and celebrates all that our Volunteers have done. We are also making improvements in our assignment and management processes. The initial step is to send all Volunteers of record a survey to find out how we can improve things. We want to find out if you are available on specific dates and if you will give us your e-mail addresses so we can contact all volunteers or groups of volunteers in specific work categories with requirements. Be looking for this in the mail. If you haven't volunteered before and want to be included, send an e-mail to volunteers@mountaincenters.org.

Our profound thanks to . . .

gifts
since
last
issue

Endowment is Key to the Future of the Mountain

You Can Help Through Your Legacy

Over the years **The Mountain** has been a meaningful part of the lives of many people. You are probably one of them. Whether you have come to **The Mountain** to learn, to rest, to work, to be refreshed or to be inspired, it's likely you left feeling better about yourself and the world. In fact, your experiences at **The Mountain** may have inspired you to support its continuing mission through regular gifts. After all, without support from the people who love and believe in **The Mountain** and what it does, it couldn't exist—let alone grow.

This might be a good time to consider a planned gift—a legacy gift—which will help **The Mountain's** endowment grow to provide a substantial measure of extra support needed to develop and enhance **The Mountain's** programs for many generations to come. A planned gift is basically an estate gift—accomplished through a will bequest, living trust designation, life insurance or retirement plan beneficiary designation and other estate-planning vehicle. In fact, there are certain types of charitable trusts and annuities which can give you a substantial tax deduction and pay you income for the rest of your life!

Many of you may know that an Endowment Board has been created at **The Mountain** to encourage endowment growth through planned gifts, as well as to develop and manage the endowment. The Endowment Board hopes the idea of adding your legacy to the future of **The Mountain** will encourage you to consider a planned gift. To further encourage such gifts, the *President's Society* has been established to recognize everyone who commits to a planned gift to **The Mountain**. **If you become a member by June 30, 2002, you'll be honored as a Charter Member of the Society** and receive an invitation to an event honoring these very special members. For more information on how to include **The Mountain** in your estate plans or to let us know you have already done so, please contact the Development Office.

Oh, Say can you see . . .

By: Mark Gramlich

We **CAN** see a launch of the space shuttle from the top of the tower.

On the evening of February 7, some staff and guests went to the top of the tower to see if we could see the launch of the space shuttle. The launch time was 6:11 p.m. and sunset was at 6:08 p.m. So, we had a great deal of light in the western sky. But, the weather was a high pressure front in the southeast United States which kept the clouds away. To our amazement, shortly after 6:11 p.m. we could see the exhaust plume from the shuttle engines. The plume disappeared behind some distant clouds after a few moments. We were pretty amazed that we could see something over 500 miles away, across the entire state of Georgia and part of Florida. If we have clear weather for a nighttime launch, we should be able to see the glow from the engines. Keep a lookout for future evening or nighttime shuttle launches. Come to The Mountain to see a shuttle launch!

For an up-to-date schedule, go to

<http://www-pao.ksc.nasa.gov/kscpao/schedule/schedule.htm>

2001-2002 Target Launch Dates and Times (EDT)

STS-100	April 19	3:12 p.m.	Orbiter - Endeavour
STS-104	June 8	6:50 p.m.	Orbiter - Atlantis
STS-105	July 12	4:45 a.m.	Orbiter - Discovery
STS-108	November	TBD	Orbiter - Endeavour
STS-109	November 1	TBD	Orbiter - Columbia
STS-110	January 17	TBD	Orbiter - Atlantis
STS-107	March 14	TBD	Orbiter - Columbia

 *YES! I want to make a donation to support The Mountain's Vision!*

Apply my contribution to:

☐ Life Member ☐ Dining Hall Remodeling ☐ Scholarship Fund ☐ General Fund
☐ \$50 ☐ \$100 ☐ \$250 ☐ \$500 ☐ \$750 ☐ \$1,000 ☐ \$5,000 ☐ \$ _____

Pay By: ☐ Check ☐ VISA/Master Card Card #: _____ Exp. Date: _____

Name: _____ Signature on Card: _____

Address: _____

City: _____ State: _____ Zip: _____

Phone: (day) _____ (evening) _____

The Mountain Retreat & Learning Centers, Inc., P. O. Box 1299, Highlands, NC 28741-1299

New E-Mail Addresses Available

In our continuing effort to upgrade communications, we have now set up e-mail addresses for all staff with direct access to a computer. This includes Learning Center for Leadership staff working off-site—Helen Bishop and Laurel Amabile. Addresses for certain Departments and Programs are also available. Please use these. (You no longer will be asked to put names or departments in the subject line.) If you do not know the name of the person or department you wish to send an e-mail to, please use info@mountaincenters.org.

Staff

abby.head@mountaincenters.org
ann.hobbs@mountaincenters.org
anne.mayher@mountaincenters.org
bonnie.gramlich@mountaincenters.org
carol.hamilton@mountaincenters.org
christy.mccollum@mountaincenters.org
helen.bishop@mountaincenters.org
ian.denham@mountaincenters.org
jane.warth@mountaincenters.org
jenny.stein@mountaincenters.org
jim.short@mountaincenters.org
julia.jamieson@mountaincenters.org
kirstin.maunum@mountaincenters.org
larry.wheeler@mountaincenters.org
laurel.amabile@mountaincenters.org
mark.gramlich@mountaincenters.org
mike.stein@mountaincenters.org
nancy.heath@mountaincenters.org
neal.resch@mountaincenters.org

richard.hobbs@mountaincenters.org
roberte.smith@mountaincenters.org
sharon.mccollum@mountaincenters.org
shelley.denham@mountaincenters.org
steve.mcmurray@mountaincenters.org
sue.boone@mountaincenters.org
susan.smith@mountaincenters.org
tom.warth@mountaincenters.org
wayne.duckworth@mountaincenters.org

Departments/Programs

development@mountaincenters.org
elderhostel@mountaincenters.org
facilities@mountaincenters.org
gsoffice@mountaincenters.org
(Guest Services Office)
info@mountaincenters.org
registration@mountaincenters.org
volunteers@mountaincenters.org
youth.programs@mountaincenters.org



20+ YEARS OF COMMUNITY

THE MOUNTAIN
RETREAT & LEARNING CENTERS, INC.
P.O. Box 1299
Highlands, NC 28741

Presorted
1st CLASS
US Postage
PAID
Highlands, NC
Permit No. 36