

# the mountain HIGHLANDS CAMP AND CONFERENCE CENTER

Star Route — Box 40-A

Highlands, NC 28741

704/526-5838

Volume IV, No. 2

Wendie Highsmith, *Editor*

May/June 1983

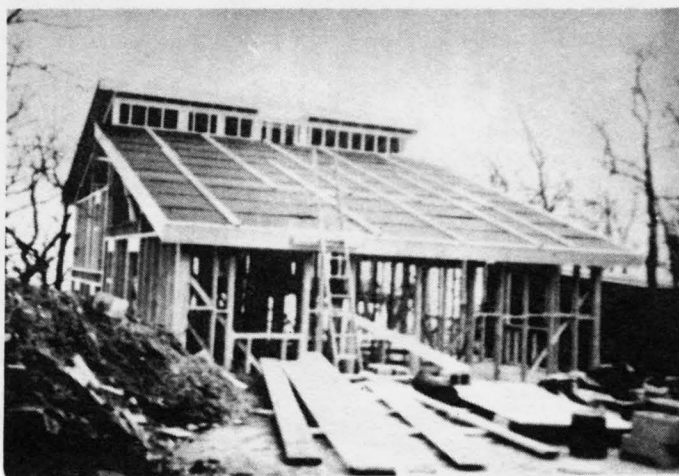
## Directors' House/Office Nears Completion!

Work on the Directors' house and office is moving right along. As of now, the exterior work is completed, and the electrical and plumbing fixtures are finished.

Under the direction of Maintenance Manager, Steve Carter, who is being assisted by staff members Larry Hyldahl and Andy Harris, plus many volunteers, an all out effort is being made to have all of the interior work done by May 15th.

The structure totals 1800 square feet, with about 1/3 of it devoted to office functions. It sits on the site between cabins 5 and 7, and its substantial use of glass on the south and east exposures will make passive solar heating possible. The building features one story on the parking lot side for the office, with the Wheelers having two stories on the front side for their quarters — living, dining, kitchen areas downstairs and two bedrooms upstairs.

When work is finished this spring, the house will still not be fully completed. Funding still needs to be found for two wood stoves, curtains and fixtures for the glass exposure, storm doors, carpeting, kitchen furnishings (stove, oven, refrigerator, cabinets, flooring) and solar tile and storage tubes. The costs of these items could approximate \$10,000, and it is hoped that friends of THE MOUNTAIN will help with either funding, wholesale purchases, or donations. Contact either the Wheelers or Steve Carter.



## Wheeler's Spring Schedule

Clarkston, GA — During the week in April and up to May 12: (404) 299-2677

THE MOUNTAIN — On weekends and all summer after May 12: (704) 526-5838

## Directors' Corner

Mo  
Larry

Since the first of the year we have traveled extensively to talk about THE MOUNTAIN — a total of 18 societies from Richmond, VA to Miami, FL. During these trips we have been heard by almost 1,000 people. We have talked with ministers and lay leadership and experienced first hand the excitement which exists here in the Southeast. We have seen rapidly growing new fellowships, groups calling ministers for the first time or shifting to full-time ministries, heard about successful capital fund drives, seen new buildings or drawings for building projects.

In our first three years of operation THE MOUNTAIN has also shown steady growth. More and more people are aware of THE MOUNTAIN, the quality programming it offers for adults, families and youth, and the uniqueness of our mountaintop setting.

Our trip to these many societies in the Southeast convinced us that we've just scratched the surface in terms of getting the word out about THE MOUNTAIN. Most of the people who heard our presentation had never been to THE MOUNTAIN, and many did not really know what it actually was. Someone asked us if this wasn't discouraging for us given all of our efforts to publicize THE MOUNTAIN. Far from it! That we have accomplished what we have to date without these people is real encouraging. They are the people who will come tomorrow and help us to continue to grow.

We're excited about the start of another summer, and about moving into our new home on THE MOUNTAIN. We're really pleased with the staff we'll have with us, both old and new, and with more talent than we've ever had previously. The summer registrations are coming in more quickly than ever before. And to come full circle, we're excited about Unitarian Universalism growth that we're seeing both here in the Southeast and beyond. We look forward to sharing THE MOUNTAIN with more UUs than ever before this summer and fall. We hope you'll be among our visitors!

Mo & Larry

## Have You Seen . . .

. . . the article in the April issue of *The National Geographic* on the Highlands area? Check it out!

## Update: Dream Sharers Emerge!

THE MOUNTAIN Membership Drive is making steady progress toward our goal of \$400,000. Thus far \$165,000 has been raised, and new pledges are coming in almost daily.

Our DREAM includes 1) paying off our mortgage, 2) repairing or replacing existing buildings and equipment, 3) establishing a contingency reserve fund for emergencies, and 4) continuing to provide you with the most appealing programming available. Contact Mo and Larry Wheeler for a brochure or the name of your area coordinator. All memberships are tax deductible. You, too, can SHARE THE DREAM.



*Good food and hearty appetites abound at THE MOUNTAIN.*

## Results Spell C-O-M-M-I-T-M-E-N-T...

THE MOUNTAIN now has four patrons! These wonderful persons (pledges of \$5,000 – \$10,000) are:

*Jake Haun*, who has raised his pledge to \$10,000.

*Carol Light*, whose \$5,000 pledge includes a life membership for her son, Eric.

*Mary Ann and Dick Ely*, who have life memberships for themselves, their 2 daughters, Melynda and Madelynn, and Memorial Life Memberships for Mary Ann's parents, Mamie Gilbert Funk and Roscoe Lane Funk.

*Ed and Anne Heath* have their Life Memberships, plus they have donated an IBM Computer and software to go with it. Now, the records of THE MOUNTAIN can be maintained and monitored almost daily!

Thank you, Patrons, from everyone!

Our newest Life Members include: Midge Leigh, Leonard and Nancy Nowak, Norman and Emily Sokoloff, Steve and SuAnn Soloway, Beaupre' Preston, Harry Savage, George and Virginia Love, Wilfred and Io Raynor, Donald and Gladys Reese, Fred and Gertrude Badger, Hiram and Polly Cody, and Emery and Lois Swan. A Second Life Membership has been pledged by Frony Ward for her daughter, Cynthia.

Our list of memberships for positions in societies is also growing. In our last newsletter we announced the position of Minister in Tallahassee, FL, which was donated by Sally Bellamy and the position of Minister in Chattanooga, TN, which was donated by Ray and Helen Solomon. Now we can add the position of Minister in Asheville, NC, which was donated by Juanita and Bob Polk. What a wonderful way to support the people who give so much to our denomination!

In addition to Life Members, we also have our current Annual Members to whom we are very grateful. Our MOUNTAIN family is large and growing. You, too, can SHARE THE DREAM!

## Creative Coordinators On The Move

Our Area Membership Coordinators have been using their ingenuity to bring UUs and THE MOUNTAIN together over the last several months. Here's just a small sampling of their efforts.

In New Orleans, Larry and Tricia Stultz report the Ellisville, MS churches are planning to charter a bus and travel to THE MOUNTAIN as a group. By sharing the transportation costs, more people may be able to make the trip to THE MOUNTAIN.

Juanita Polk (Asheville, NC) brought 40 people to THE MOUNTAIN as part of their local membership drive in Asheville, NC.

Bob Drew (Boca Raton, FL) reports that Nancy Roen and Tom McNally met with the Life Members in Ft. Lauderdale. A square dance is being planned to promote THE MOUNTAIN.

Elena Speidel (Charlottesville, VA) threw an "ice cream orgy" to promote THE MOUNTAIN. Paula Abady gave a brunch following the Wheelers' church service in Richmond. Dillman Sorrells gave a wine and cheese social in Clemson, SC. Roy Greene arranged a presentation in Ft. Myers, FL. Angela Forbus arranged for Board President, Roger Comstock, to speak to the Birmingham, AL church, and many others hosted socials and dinners on the Wheelers' trips this winter.

The "happenings" list goes on and on. We appreciate the enthusiasm of our organizers and the response of the participants. It is our goal to spread the word about THE MOUNTAIN to every UU in the southeast. It's a dream worth the sharing.

## Outdoor Equipment Needed

Perhaps that equipment you no longer need can find second home with THE MOUNTAIN. Call Mo or Larry if you can spare any of these items: backpacking equipment, rafts, kayaks, canoes and other water equipment, binoculars, hard lenses, dip nets, aquariums, softball bats and gloves, tennis racquets, etc.



*Alvin Hilyer instructs work-adventure campers in bridge building.*



## 1983 Special Weekends

Save time on your busy calendars for these special weekends at THE MOUNTAIN:

**May 27 – 30** — Life Members Weekend – invitations are in the mail for our annual Memorial Day celebration for Life Members and their families. Lee Knight will entertain! Dedication of the new Director's house/office.

**July 1 – 4** — Fourth of July celebration complete with our annual field day and fireworks on **Saturday**.

**July 22 – 24** — Stop on the way to Summer Institute.

**July 30 – 31** — Stop on the way home from Summer Institute.

**September 2 – 5** — Labor Day Weekend. Help us close out the Summer with a field day, arts and crafts show, and our annual "pig roast."

**September 30 – October 2** — Second Annual Oktoberfest – welcome the fall with German food, dancing, and all the festivities.

**November 4 – 6** — THE MOUNTAIN's Annual Meeting.

## Report From The Board

Your MOUNTAIN board continues to be a very active organization. Highlights of the March 5 – 6 meeting were:

1. Plans were made for financing the completion of the Directors' new home/office. An additional \$20,000 in loans will be raised, bringing the total for the project to \$38,000.

2. The Board agreed to raise \$40,000 in short term loans from members to cover the winter cash flow drain and the spring mortgage payments. These will be repaid in August from summer proceeds.

3. We deferred until the June meeting a creative plan for financing the redesign and winterizing of more cabins.

Highlands Camp and Conference Center Board meetings open meetings. All are invited to attend and join in the discussion. Our next three meetings are scheduled at THE MOUNTAIN for June 4 – 5, September 10 – 11, and November 5 – 6. YA'LL COME!

Roger Comstock, President  
Board of Directors

## Nominating Committee Presents Slate For November Meeting

The Nominating Committee announces the following members of THE MOUNTAIN have been selected as candidates for open positions on the Board and Nominating Committee:

– Board position (1) (replacing Judy Bonner): Doyle Chadwick, Larry Landrum, and John Phelps.

– Nominating Committee positions (2) (replacing Ray Hubbard and Mary Nelson): Janet Harvey, Verda Little, and Mary Nelson.

## Veatch Lends A Hand

Once again, the North Shore Unitarian Universalist Veatch Program has helped us out. This time, they have agreed to refinance our loan to stabilize THE MOUNTAIN's debt service program. Under the new plan, our total debt service is stabilized at about \$80,000 per year, while the total time to pay off both mortgages (Veatch and Pinecrest) is extended to thirteen years.

The financial plan submitted in support of our request envisions a full summer program and the receipt of an over-ave of \$70,000 in contributions from members each year . . . a healthy commitment.

## Summer Program Update

We are pleased to announce two special guest ministers for the beginning and end of the summer:

• Sunday, May 29 — Rev. Alfred Hobart, Minister Emeritus of both the Birmingham, AL and Fort Myers, FL churches. The Hobarts are summer residents of Highlands and an important part of our MOUNTAIN community.

• Sunday, September 4 — Rev. Bob Hill, our NEW Southeast Interdistrict Representative.

Christine Robinson, Minister of the Columbia, SC Fellowship will be minister of the week June 19 – 25, and will lead the Creating Worship workshop. Chris replaces Frances West, who is unable to attend because of a change in the chaplaincy program at Emory University.

There is one significant omission in the brochure. The cost of each of the Elderhostel programs is \$180.00, which includes a \$30 deposit. Space may well still be available, but check with the Wheelers prior to sending registrations to Boston, to be sure.

*Summer at THE MOUNTAIN means . . .*



*active team games,*



*. . . a taste of fresh, juicy watermelon.*

## THE MOUNTAIN Welcomes Elderhostel

Leslie Donavon has done a terrific job of programming for our new Elderhostel venture, and her hard work is paying off. Two weeks already have long waiting lists and the others are filling up fast.

Elderhostel provides stimulating programs at colleges and other educational institutions for people 60 years of age and over. The programs are inexpensive (\$180) and varied. Now UUs can enjoy Elderhostel at THE MOUNTAIN – and THE MOUNTAIN can share its beautiful facility more during the non-summer seasons.

## Keep In Mind . . .

A New TAX REGULATION permits summer camp expenses as deductions as child care expenses if camp is used as a substitute for child care when both parents are working.

There is also a possibility of deducting the costs of Leadership School, RE week, and the Creating Worship program, especially for transportation. Consult your accountant or IRS office for more information.

## Campers . . . RE . . . Can Afford It Now

CAMPERSHIPS are awarded to deserving UU youth who might not otherwise be able to attend summer camp at THE MOUNTAIN. Write to find out how individuals or societies can contribute to the campership fund for 1983 or obtain information for youth desiring to apply for a campership.

Evelyn Carter  
Star Route, Box 40-A  
Highlands, NC 28741

Walt Pirie  
306 Eakin E.  
Blacksburg, VA 24060

Also, the Thomas Jefferson District RE Committee will provide partial scholarships to individuals from the District attending THE MOUNTAIN's RE Conference, June 26 – July 2. Any interested people should contact the District RE Chair, Janet Harvey, Rt. 4, Box 203, Waynesville, NC 28786.

## Investment Opportunity Available

Did you know that through the use of your self-directed IRA you can help THE MOUNTAIN? For more information call Bob Shaklee (404) 925-3364 or Roger Comstock (404) 373-8320.

## THE MOUNTAIN

HIGHLANDS CAMP & CONFERENCE CENTER

Star Route — Box 40—A

Highlands, NC 28741

## Transition

THE MOUNTAIN has just received a grant of \$3,200 from the UUA Grants Panel to fund the writing of a larger grant proposal for a project called TRANSITION. The project is an "intergenerational work-study program for transitional UU youth and older adults." It is designed to combine two age groups in a work-study, living together situation on THE MOUNTAIN. The age groups are 1) older adults in transition from the world of work to retirement, and 2) young adults ages 18 – 25 who are in the transition from home to college or college to the work world.

This innovative idea will be a research project based on Adlerian psychology. Additional grants will be sought from both UU and non-UU sources. Walt Hodges is chair of the TRANSITION committee.

## Couple Sought For Fall And Winter

THE MOUNTAIN is looking for a couple to assist with cooking and maintenance during September – May period. Room and partial board will be provided in addition to salaries. Anyone interested should send their names, address, and backgrounds to Mo and Larry.

Non-Profit Org.  
U.S. Postage  
PAID  
Permit No. 46  
Highlands, NC 28741

THIRD CLASS MAIL

ADDRESS CORRECTION REQUESTED

