

the mountain

HIGHLANDS CAMP AND CONFERENCE CENTER

Star Route — Box 40-A

Highlands, NC 28741

704/526-5838

Volume II, No. 5

Wendie Highsmith, *Editor*

Nov./Dec., 1981

BOARD RATES 2nd MOUNTAIN YEAR A SUCCESS

THE MOUNTAIN board spent an entire weekend evaluating the results of 1980-81, our second full year of operation, and developing programming and budget goals for 81-82.

Overall, the results of the past year were very positive. More people than ever enjoyed the use of our Mountain and went away enthused. Substantial progress was made in improving the physical plant—particularly the invisible but necessary plumbing and electrical systems. Community relations greatly improved, with many townspeople attending our weekly Sunday services. Our long range plan was completed, and the fund drive closed out over the goal. The low note was a net drain in our cash resources due, in large part, to the heavy debt service load we are carrying in these first few years of operation. The net cash flow for the year was a negative \$25,000. Fortunately we received an anonymous loan of \$20,000 with very favorable repayment terms to help with the Fall mortgage payment.

Our program and budget plan for the ensuing year envisions many more program offerings for both youth and adults and greater opportunities for adults with children. Consistent with the need to build our cash position, the budget will be limited to essentials with a very conservative revenue forecast. A new fund drive begins soon; more details to follow.

All in all, results to date have been very satisfactory, with high hopes and enthusiasm for the future.

*** Roger Comstock
Board President

DIRECTORS' CORNER

Mo LARRY

The move back to Atlanta marks the end of another season. Feelings range from relief to exhaustion to satisfaction. It was a good summer!

The commuting on weekends gives us the opportunity to keep Brian in school in Atlanta and also to enjoy the changes in seasons across the one hundred and some miles. But it has its stresses, and we'll be glad to someday settle in Highlands. In the meantime, Mo has spent several weeks on *THE MOUNTAIN* this Fall and has enjoyed the coming and going of folks from all over to see the spectacular colors.

We are feeling good about the way *THE MOUNTAIN* is developing as an intergenerational community where all ages can feel welcome and relaxed. We feel quite proud of our ability to generate hikes and activities for a wide range of interests and abilities. Part of the credit goes to the area's many natural resources, of course. But we also appreciate our talented and diverse staff.

This summer our attendance tripled versus last summer, and we hope to see a similar trend this winter. The cold weather brings clear skies and more stars than you ever imagined. A few inches of snow are always possible and bring extra beauty and fun to *THE MOUNTAIN*. The Lodge and winterized cabins provide a warm retreat from the often crisp weather. It's a season we especially enjoy. Take advantage of the reduced rates and join Steve and Evelyn Carter and us at our Mountain paradise.

To register for any times during the winter send a deposit of \$10 per person to Mo and Larry Wheeler:

Weekdays: 1120 Gunnison Ct.
Clarkston, Ga. 30021
404/299-2677

Weekends: 704/526-5838



1981 Summer Campstaff & "Ascenders"

YOUR JUNQUE IS OUR TREASURE or Donations Still Needed at *THE MOUNTAIN*

Remember *THE MOUNTAIN'S* needs list when you're cleaning out, moving, etc.:

lamps(table & floor)	electric skillets
end tables	radial arm saw
toasters	tractor-garden or farm
rugs or carpeting	power lawn mower
blankets	lawn roller/hand or tractor pulled
washer & dryer	ironing board
video tape player (1/2" VHS)	clothes iron
arc welder	photographic enlarger

SPECIAL GIFTS REQUESTED

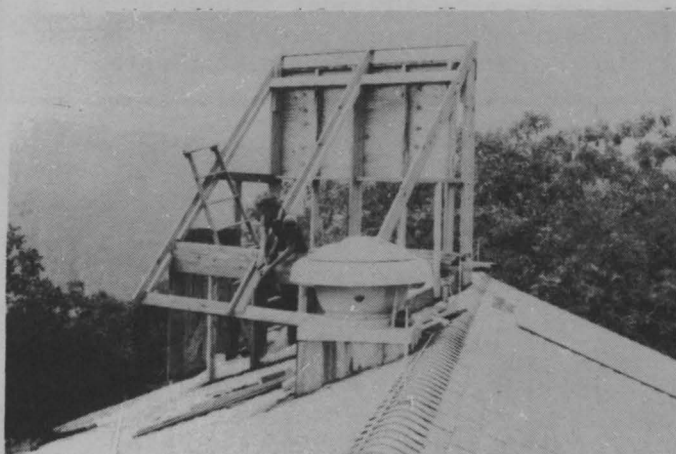
In our early years our financial situation dictates great care in budgeting improvements in our facility. Therefore we need to rely on special gifts from friends and members of *THE MOUNTAIN* to accomplish many of our site objectives.

Any donations are tax deductible and while dollar amounts aren't stated for most of the listed items, any amount will be appreciated. These projects (when completed) will total around \$11,000. Gifts can be used as they are received to begin one or more of these projects.

Rocking chairs for cabin porches . . . \$50 each
Snow plow for our pick-up truck
Donations for further winterizing of Dining Hall and Program Center
Gutters for Dining Hall, Recreation Hall, Cabins 1-5 and Craft Building

LEST WE FORGET...

The generosity of many individuals and several societies has enabled us to purchase some much needed items this last year: Sound System, Rocking chairs for cabin porches, Heating System for Dining Hall and Lounge, and Mirrors. We extend much gratitude and love for these gifts.



Solar heating project at Dining Hall takes final form. Kenny Suda of Maintenance staff fits boards.

MOUNTAIN SKI WEEKENDS PLANNED

Any time between late December and mid-March should be good for skiing. Scaly Mountain and its 2 slopes are only 4 miles away, while Sapphire Valley's 3 slopes are but 14 miles. Usually, all the snow is artificial. Rental equipment is available at both places.

Make reservations to come any weekend that suits you, but *THE MOUNTAIN* has set aside 3 weekends especially for skiers: January 22-24; January 29-31; February 12-14.

Meals will be available Friday night dinner thru Sunday lunch, with both Saturday and Sunday lunches packed for you to take to the "the slopes." Transportation will be available from the Atlanta airport and the Chff Valley Church (UUCA). Our van will leave the airport on Friday at 6:00pm (with dinner on the way) and arrive back to the airport on Sunday by 6:00pm. Special prices will be in effect for these weekends-- \$50 for adults to include room and board (2 nights/6 meals) and transportation to/from the slopes. Atlanta transportation is available for \$10 round trip.

IF YOU'RE WORRIED ABOUT THE WINTER DRIVING CONDITIONS—

Don't be...Snow is seldom a serious factor in the ride to *THE MOUNTIAN*. If you are concerned, stop in either Scaly Mountain or Highlands and call us. We'll meet you at the bottom of our road, provide tire chains for your vehicle and/or transport you in one of ours.

HOLIDAYS ARE SOME OF THE BEST TIMES AT *THE MOUNTIAN*

December 18-January 3

Come early and stay late, but even if it's only for a day or two, please come--Bring **your** Christmas to *THE MOUNTAIN*! Help us find our Christmas tree in the surrounding forest, bring it back to the Lodge and decorate it. Christmas Day has been a white one two years in a row! It's a gorgeous time for hikes and to discover sights which weren't visible when the leaves were on the trees. New Years Eve will feature a gala party and yes, we'll even relax or normal TV rule and provide one so you can watch parades and football games on New Year's day.

*PROGRAM LEADERS/ IDEAS SOUGHT

-Let Mo and Larry know immediately if you have a program idea or suggested leader(s). The more detail you can give, the better.

SUMMER '82

PLANS IN THE MAKING

Next summer is less than a year away...Your Director and Board are already preparing the biggest and best one yet. Here are some brief highlights.. The complete program will appear in the next newsletter; the Brochure will be out in February.

***MORE YOUTH CAMPING PLANNED**

- 14 to 17 yr. olds: June 13-26
(Senior High Camp)
- 15 to 17 yr. olds: June 27-August 21
Junior Camp Staff(limit 8)
(The Ascenders)
- 14 to 16 yr. olds: June 27-July 10
One adventure week and
one work week (limit 10)
- 17 to 18 yr. olds: June 27-August 21
One adventure week, one
Counselor training week,
then 6 weeks as Junior
Counselors
- 11 to 13 yr. olds: July 11-August 7
Stay for 2, 3, or 4 weeks
- 7 to 10 yr. olds: August 1-21
Stay for 2 or 3 weeks

***TWO SPECIAL PROGRAMS ALREADY ANNOUNCED**

-FIRST ANNUAL LEADERSHIP SCHOOL

We will host our first annual Leadership School for potential and current church/fellowship leaders, July 18-24. It will be led by UUA Director of Extension, Joan Goodwin, the Reverend Ken MacLean, UUA Board Member and Minister of Cedar Lane Church, Bethesda, Md., and Elinor Artman, Cincinnati, Ohio. Special guests will be Gene and Helen Pickett.

-SECOND ANNUAL

RELIGIOUS EDUCATION CONFERENCE

Based on last summer's successful experience, we have decided to make an RE conference an annual event. 1982's Conference will again be coordinated by Corelyn Midelfort, Director of Religious Education, Charlottesville, Virginia. It is scheduled for June 27-July 3. Participants will be able to bring their children or families with them and/or stay on for July 4th with families joining the participants for a fun-filled holiday weekend.

CHURCH/FELLOWSHIP LEADERSHIP PLEASE NOTE:

Please give consideration to setting aside funds in your 1982 budget for both of these programs. Costs for one adult for a full week will be between \$190-\$220.

MOST OF SUMMER TO BE INTERGENERATIONAL

Except for the first two and last two weeks of the summer when children are typically in school, all programs will be staffed to allow adults to come to *THE MOUNTAIN* alone, with children, or with families. Programming and staffing will be provided to accommodate all. As always, adults/coming alone will be housed by themselves.

NEW SLIDE SHOW READY FOR THE ROAD

Mo and Larry Wheeler have completed a new slide show which has been up-dated to include events of this past year. Even if you've seen the previous ones, this new one is a must.

There are three copies of the show which includes 80 slides in a carousel tray with accompanying music or a complete script, suggested readings and music for worship services.

To reserve it, contact Mo and Larry.

YOUTH CAMBERSHIP FUND ESTABLISHED

The Thomas Jefferson District Board of Trustees recently voted to contribute \$300 to *THE MOUNTAIN* to help start a campership fund to enable more youth to attend camp at *THE MOUNTAIN* beginning in 1982.

We hope many of you will contribute to the Fund, which will be used both with UU families who need assistance and with others such as the Atlanta Inner City youths who attended camp this past summer. Send your contributions the *THE MOUNTAIN*.

***STAFF NEEDED**

-Start thinking now about spending all or a part of your summer at *THE MOUNTAIN*. Positions are available on the Camp Staff (18 years and older) in maintenance, the kitchen, waterfront, horses, crafts, athletics, nature, general programming, office work, etc. Staff positions are also available in the various Youth Programs for Junior Counselors(17 & 18 yr. olds) and Senior Counselors(19 years and older) who are generalists or have special skills. Contact Mo and Larry if interested in working on either staff (indicate potential areas), and they'll send you more information in early 1982.

KITCHEN HELP SOUGHT THIS WINTER/NEXT SPRING

A good way to spend time at *THE MOUNTAIN* in the next 5-6 months is to volunteer to work in the kitchen. Helping to prepare and clean-up for meals. If you're interested, contact Mo and Larry. You'll receive free room and board for the time you work and help keep our staff costs to a minimum.

MAINTENANCE PROJECTS CONTINUE

Steve Carter, his maintenance crew of Kenny Suda, Lee Knight and Andy Beard, and the Work Week participants, have worked hard to prepare *THE MOUNTAIN* for colder weather with several projects this Fall. The main pump house has been rebuilt and winterized; the solar heating panels have been installed at the dining hall; the dining hall sewage line and drain field have been replaced; the water line to the dining hall has been replaced and winterized; Cabins 1-5 have new wood siding put on over last year's plastic and foam winterizing; and the new septic and water lines from the Lodge through Cabin 1 have been completed. A BIG "THANKS" TO ALL OF YOU!!

WINTER ON *THE MOUNTAIN*

Start planning now to spend some time at *THE MOUNTAIN* during the winter months. We have available the Lodge (with oil heat and 3 fireplaces), our 4 winterized cabins, and the Program Center with its nice fireplace. The dining hall (also heated) will regularly be open when we have 15 or more guests.

Space is currently available in our heated facilities any weekday (starting now) or weekend (starting December 4). Come alone, with your children, a guest or your spouse...or better yet organize a group or enroll in a program that appeals to you.

UUCA
1911 Cliff Valley Way, NE
Atlanta, Georgia 30329

THIRD CLASS MAIL

POWER OF CREATIVE NON-VIOLENCE

SEMINAR SCHEDULED MARCH 12-14

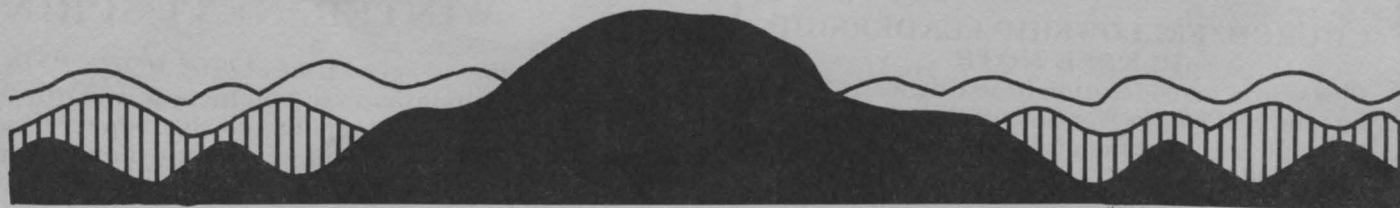
Bob Alpern, Director of the UUA's Washington office, will present a seminar entitled, "Power of Creative Non-Violence" at *THE MOUNTAIN* Mar. 12-14, 1982.

The participants will look at the history of non-violence in early civilizations right up to the present in Poland. They will study the rich variety of non-violent techniques that are generally not being tried as alternatives to the use of force for resolving conflicts. The life affirming strength of a non-violent way will be examined using experimental exercises. Special emphasis will be placed on present situations where non-violence can offer rich possibilities for producing change, with a potential for reduced damage to individuals, societies, and the earth.

A special weekend price of \$50 for adults will include room and board (2 nights, 6 meals). Transportation will be available from the Atlanta airport and the Atlanta Cliff Valley Church. Departure from the airport will be 6:00 p.m. Friday (with dinner on the way) and arrival back at the airport will be at 6:00 p. m. Sunday. The cost of transportation will be \$10 round trip.



Non-Profit Org.
U.S. Postage
PAID
Permit No. 169
Atlanta, Georgia



PRINTED BY MACON GRAPHICS, INC. • Franklin, NC 28723